



Thaw and Culture Details

Cell Line Name	UCSD194i-29-1
WiCell Lot Number	WB52612
Provider	University of California, San Diego – Dr. Kelly Frazer
Banked By	WiCell
Thaw and Culture Recommendations	WiCell recommends thawing 1 vial into 3 wells of a 6 well plate.
Culture Platform	Feeder Independent
	Medium: mTeSR™ 1
	Matrix: Matrigel®
Protocol	WiCell Feeder Independent mTeSR™ 1 Protocol
Passage Number	p22 These cells were cultured for 21 passages prior to freeze and post reprogramming. WiCell adds +1 to the passage number to best represent the overall passage number of the cells at thaw.
Date Vialied	30-November-2016
Vial Label	UCSD194i-29-1 p22 WB52612
Biosafety and Use Information	Appropriate biosafety precautions should be followed when working with these cells. The end user is responsible for ensuring that the cells are handled and stored in an appropriate manner. WiCell is not responsible for damages or injuries that may result from the use of these cells. Cells distributed by WiCell are intended for research purposes only and are not intended for use in humans.

Testing Performed by WiCell

Test Description	Test Provider	Test Method	Test Specification	Result
Post-Thaw Viable Cell Recovery	WiCell	SOP-CH-305	≥ 15 Undifferentiated Colonies, ≤ 30% Differentiation and recoverable attachment after passage	Pass
Identity by STR	UW Translational Research Initiatives in Pathology Laboratory	PowerPlex 16 HS System by Promega	Defines profile	Pass
Sterility	Biotest Laboratories	ST/07	Negative	Pass
Mycoplasma	WiCell	SOP-QU-004	Negative	Pass
Karyotype by G-banding	WiCell	SOP-CH-003	Report karyotype	Pass



Testing Reported by Provider

The Provider stated that some or all of the additional analyses listed below may have been performed for this cell line. For more information, publication and dbGaP links, where available, are provided on the cell line specific web page on the WiCell website.

- Illumina® HumanCoreExome BeadChip Array
- RNA-Seq
- Flow Cytometry (SSEA-4, Tra 1-81)
- Infinium® Expanded Multi-Ethnic Genotyping Array (MEGA^{EX})

Approval Date	Quality Assurance Approval
20-December-2016	<p style="text-align: right;">1/5/2017</p> <p>X AMK _____</p> <p><small>AMK Quality Assurance Signed by Klade, Anjelica</small></p>



Short Tandem Repeat Analysis



Department of Pathology and Laboratory Medicine
TRIP Laboratory (Molecular)
<http://www.pathology.wisc.edu/research/trip>

WiCell®
info@wicell.org
(888) 204-1782

Sample Report:

12063-STR
Sample Name on Tube: 12063-STR
85.5 ng/μL, (A260/280=1.86)
Sample Type: Cells
Cell Count: ~2 million cells

Requestor:

WiCell Research Institute
Quality Department

Sample Date: N/A

Receive Date: 12/19/16
Assay Date: 12/20/16
File Name: 161222 WMR
Report Date: 01/02/17

STR Locus	STR Genotype Repeat #	STR Genotype
FGA	16-18,18.2,19,19.2,20,20.2,21,21.2,22, 22.2, 23, 23.2, 24, 24.2, 25, 25.2, 26-30, 31.2, 43.2, 44.2,45.2, 46.2	Identifying information has been redacted to protect donor confidentiality. If more information is required, please, contact WiCell's Technical Support .
TPOX	6-13	
D8S1179	7-18	
vWA	10-22	
Amelogenin	X,Y	
Penta_D	2.2, 3.2, 5, 7-17	
CSF1PO	6-15	
D16S539	5, 8-15	
D7S820	6-14	
D13S317	7-15	
D5S818	7-16	
Penta_E	5-24	
D18S51	8-10, 10.2, 11-13, 13.2, 14-27	
D21S11	24,24.2,25,25.2,26-28,28.2,29,29.2, 30, 30.2,31, 31.2,32,32.2,33,33.2, 34,34.2,35,35.2,36-38	
TH01	4-9,9.3,10-11,13.3	
D3S1358	12-20	

Results: Based on the 12063-STR cells submitted by WiCell QA dated and received on 12/19/16, this sample (Label on Tube: 12063-STR) defines the STR profile of the human stem cell line UCSD194i-29-1 comprising 27 allelic polymorphisms across the 15 STR loci analyzed.

Interpretation: No STR polymorphisms other than those corresponding to the human UCSD194i-29-1 stem cell line were detected and the concentration of DNA required to achieve an acceptable STR genotype (signal/noise) was equivalent to that required for the standard procedure (~1 ng/amplification reaction) from human genomic DNA. This result suggests that the 12063-STR sample submitted corresponds to the UCSD194i-29-1 stem cell line and was not contaminated with any other human stem cells or a significant amount of mouse feeder layer cells.

Sensitivity: Sensitivity limits for detection of STR polymorphisms unique to either this or other human stem cell lines is ~2-5%.

X *RMB* Digitally Signed on 01/03/17

TRIP Laboratory, Molecular

X *WMR* Digitally Signed on 01/03/17

UWHC Molecular Diagnostics Laboratory / UWSMPH TRIP Laboratory

Testing was accomplished by analysis of human genetic polymorphisms at STR loci. This methodology has not yet been approved by the FDA and is for investigational use only. Acknowledge TRIP in your publications, posters & presentations. For details, see: <http://www.pathology.wisc.edu/research/trip/acknowledging> TRIP agrees to maintain the confidentiality of any information provided to it in connection with its performance of this STR analysis on the same conditions as set forth in paragraph 2 of WiCell's Terms and Conditions of Service (<http://www.wicell.org/media.acux/1a429b84-2b54-44a4-8ad8-5c05db93dd8a>).

**CORRECTED
REPORT**

WiCell Research Institute, Inc.

WiCell Quality Assurance

BIOTEST SAMPLE # 16120579

VALIDATION # NG

TEST PURPOSE NG

PRODUCT UCSD135i-81-1 WB52272 12052
UCSD194i-29-1-WB52612 12053
UCSD077i-1-8 WB52432 12054
UCSD116i-71-1-WB52431 12055
UCSD222i-120-1-WB52614 12056
UCSD070i-1-1-WB52613 12057
UCSD003i-16-2-WB53533 12058
UCSD221i-119-1-WB53573 12059
UCSD192i-13-2-WB53109 12060
UCSD231i-SAD1-3-DB26804 12062

PRODUCT LOT NA

STERILE LOT NA

STERILIZATION LOT NA

STERILIZATION DATE NA

STERILIZATION METHOD NA

SAMPLING BLDG / ROOM NA

BI LOT NA

BI EXPIRATION DATE NA

DATE RECEIVED 2016-12-08

TEST INITIATED 2016-12-09

TEST COMPLETED 2016-12-23

REFERENCE Processed according to LAB-003: Sterility Test Procedure

Ten (10) products were each divided between 40 mL TSB and 40 mL FTG. The samples were then cultured at 20-25 C and 30-35 C respectively and were monitored for a minimum of 14 days.

- USP
- BI Manufacturers Specifications
- Other

RESULTS	# POSITIVES	# TESTED	POSITIVE CONTROL	NEGATIVE CONTROL
Sterile	0	10	NA	2 Negative

Specific test results may not be indicative of the characteristics of any other samples from the same lot or similar lots. Liability is limited to the costs of the tests. The uncertainty of measurement associated with the measurement result reported in this certificate is available from the organization upon request.

Biotest Laboratories ■ 9303 West Broadway Ave. ■ Brooklyn Park, MN 55445 ■ USA ■ (763) 315-1200

**CORRECTED
REPORT**

BIOTEST SAMPLE # 16120579

COMMENTS Report revised due to missing product name.

REVIEWED BY



DATE

30 Dec 10

Specific test results may not be indicative of the characteristics of any other samples from the same lot or similar lots. Liability is limited to the costs of the tests.



Mycoplasma Detection Assay Report

Testing Performed by WiCell

Lot Release Testing

12-16-2016

FORM SOP-QU-004.01

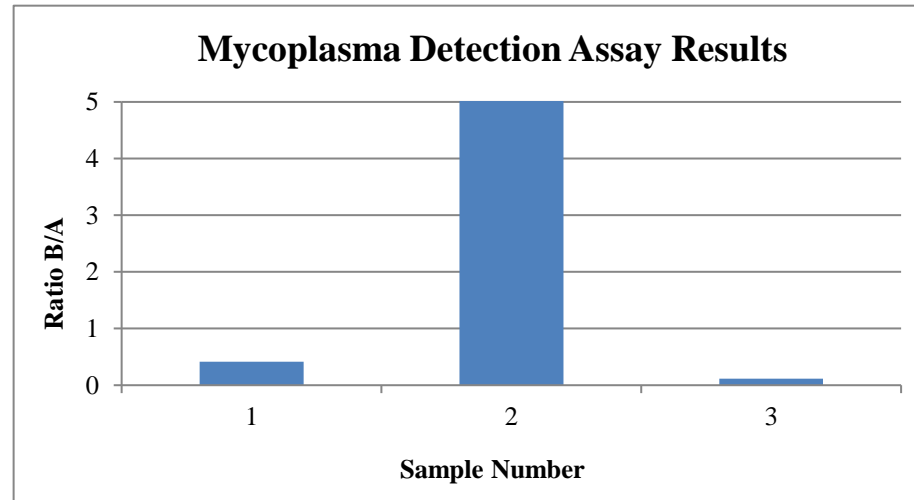
Version F Edition 02

Reported by: OG

Reviewed by: JB

BD Monolight 180

#	Sample Name	Reading A			Reading B			Ratio B/A	Result	Comments/Suggestions
		RLU1	RLU2	Ave	RLU1	RLU2	Ave			
1	UCSD194i-29-1-WB52612 12063	218	213	215.5	91	88	89.5	0.42	Negative	
2	Positive (+) Control	374	359	366.5	33626	34148	33887	92.46	Positive	
3	Negative (-) Control	683	685	684	81	80	80.5	0.12	Negative	



Date Reported: Thursday, December 22, 2016

Cell Line Gender: Female

Cell Line: UCSD194i-29-1-WB52612 12063

Reason for Testing: Lot release testing

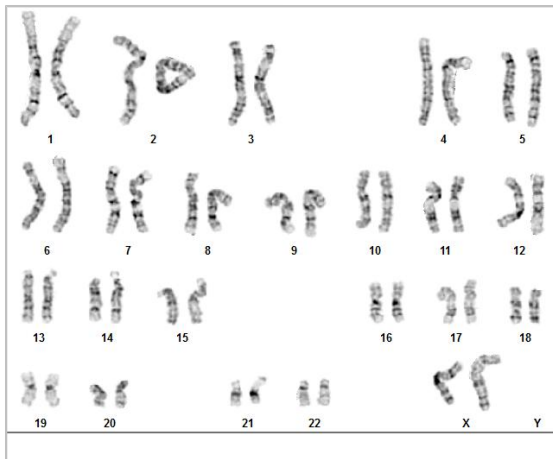
Passage#: 22

Date of Sample: 12/13/2016

Investigator: [REDACTED], WiCell CDM

Specimen: iPSC

Results: 46,XX



Cell: 6

Slide: 4

Slide Type: Karyotype

Total Counted: 20

Total Analyzed: 9

Total Karyogrammed: 4

Band Resolution: 450 - 550

Interpretation:

This is a normal karyotype. No clonal abnormalities were detected at the stated band level of resolution.

Completed by: [REDACTED] CG(ASCP)

Reviewed and Interpreted by: [REDACTED], PhD, FACMG

A signed copy of this report is available upon request.

Date: _____ **Sent By:** _____ **Sent To:** _____ **QC Review By:** _____

Limitations: This assay allows for microscopic visualization of numerical and structural chromosome abnormalities. The size of structural abnormality that can be detected is >3-10Mb, dependent upon the G-band resolution obtained from this specimen. For the purposes of this report, band level is defined as the number of G-bands per haploid genome. It is documented here as "band level", i.e., the range of bands determined from the four karyograms in this assay. Detection of heterogeneity of clonal cell populations in this specimen (i.e., mosaicism) is limited by the number of metaphase cells examined, documented here as "# of cells counted".

This assay was conducted solely for listed investigator/institution. The results may not be relied upon by any other party without the prior written consent of the Director of the WiCell Cytogenetics Laboratory. The results of this assay are for research use only. If the results of this assay are to be used for any other purpose, contact the Director of the WiCell Cytogenetics Laboratory.

Unless otherwise mutually agreed in writing, the services provided to you hereunder by WiCell Research Institute, Inc. ("WiCell") are governed solely by WiCell's Terms and Conditions of Service, found at www.wicell.org/privacyandterms. Any terms you may attach to a purchase order or other document that are inconsistent, add to, or conflict with WiCell's Terms and Conditions of Service are null and void and of no legal force or effect.